

AEBI

Aebi MT

Professional implement carrier





“We’ve only been using it for about two months and cannot imagine life without it. Whether felling trees, pruning, moving, tackling weeds or winter maintenance – the Aebi MT is our all-rounder.”

Hajo Prickartz,
Prickartz Gardening
Service from Stolberg



Compact. Powerful. Efficient.

Equal to every challenge. All year round.

Compact narrow-track transporter, agile fast runner and all-purpose carrier vehicle. All combined in one vehicle? Anyone who thinks this combination is impossible should take a closer look at the Aebi MT. The transporter meets wide-ranging requirements and, by offering also a semi-trailer option, combines the benefits of a compact transporter with the versatility of a large tractor-trailer combination.



***Simply* work more professionally**

Any assignment can be mastered

***Simply* more multifunctional**

- ▣ Four attachment points
- ▣ Quick-change system with lifting gear
- ▣ 4x4 off-road capability
- ▣ Can be deployed all year

***Simply* easier to service**

- ▣ Easily tiltable cab
- ▣ Easy access to the engine compartment
- ▣ Low-maintenance engines
- ▣ High-quality and visually attractive plastic on inside and outside

***Simply* more economical**

- ▣ Work more profitably
- ▣ Maximum load capacity of up to 4800kg
- ▣ Economical EURO 6c engine
- ▣ Work economically with eco-drive
- ▣ Reversible fan with oil cooler on side



***Simply* safer**

- ▣ Four-wheel drive
- ▣ Dual-circuit brake system
- ▣ Internally ventilated disk brakes
- ▣ Certified safety cab





The right model for everyone

- MT750: 6-cylinder with 115kW (156hp)
- MT740: 4-cylinder with 80kW (109hp)
- Top speed of 89km/h or 40km/h

Simply more enjoyable to work with

- Panoramic view of all attachments
- Easy to operate
- User-friendly ergonomics

Simply unique:

Aebi MT Semi-Hydrostat:

offers the optimum drive for any assignment. Work with variable speed from 0 to 20 km/h, drive mechanically up to 89 km/h. No coupling means less wear and tear. Enhanced safety thanks to constant positive engagement between engine and wheels

Aebi MT with double cab:

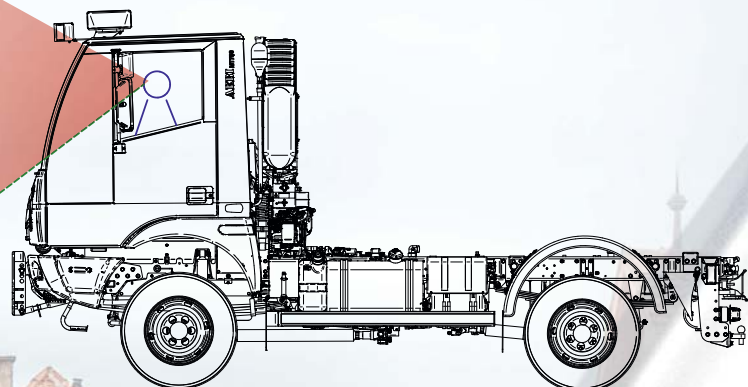
offers space for up to six seats or additional storage space. Easy access to the engine guaranteed thanks to hydraulically tiltable cab



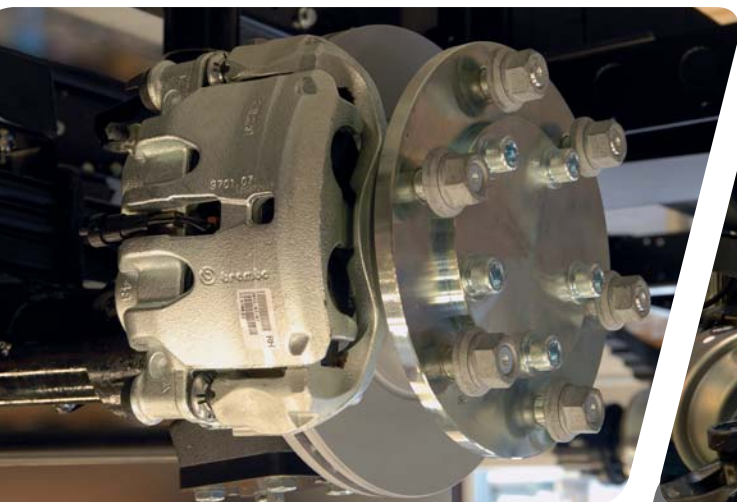
***Simply* see better – work made easy**

A vehicle cabin needs to be adapted to suit the driver, rather than the driver adapting to suit the cabin. In the new cockpit, the driver and co-driver therefore feel at home straight away thanks to

- panoramic cabin
- adjustable steering column
- new Smart Navigator
- ergonomically arranged operating elements
- air-sprung driver's seat (option)
- footrest and more legroom

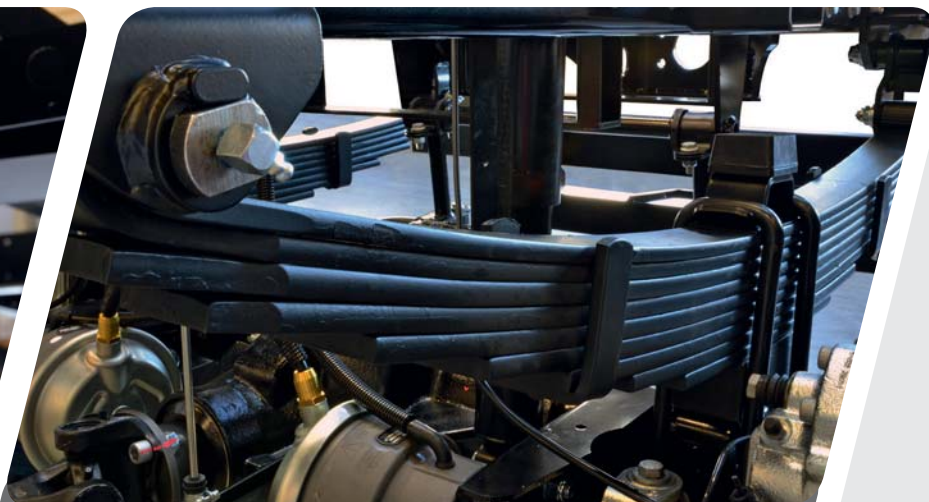


Safe, powerful and compact



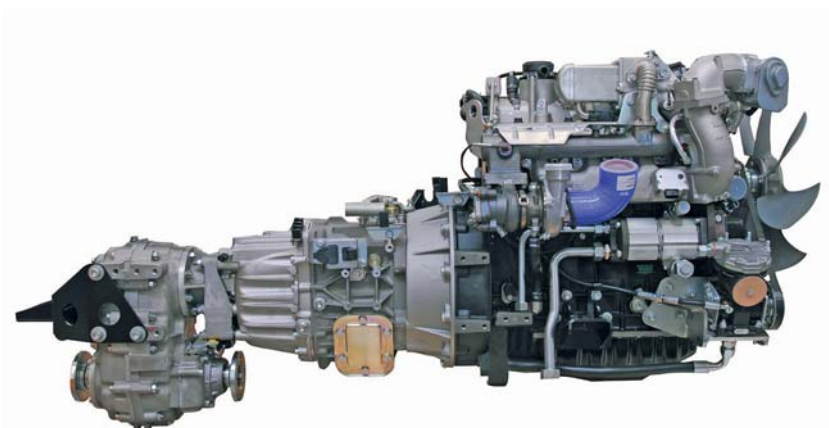
The braking system

The braking system with ABS works with two independent circuits at the front and back with two ventilated disk brakes. The parking brake works on the back brake disks.



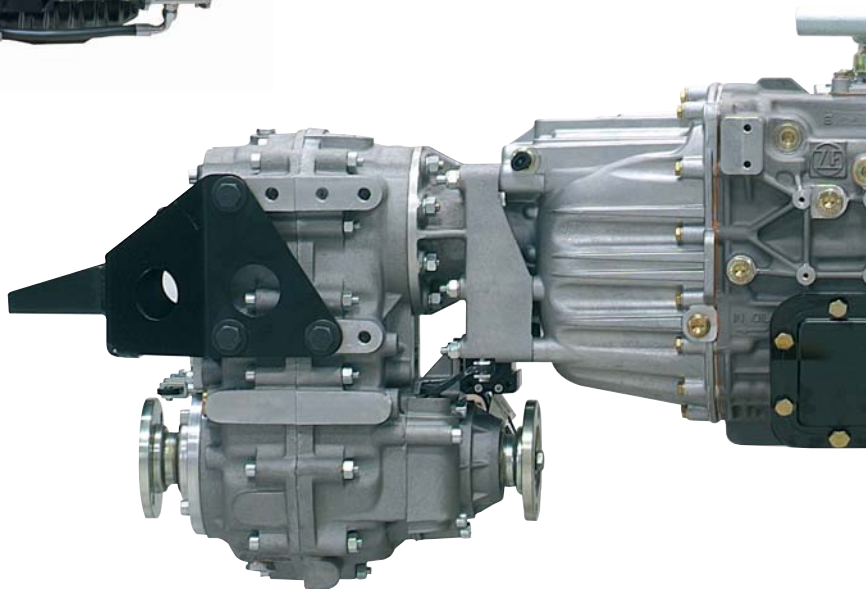
The chassis

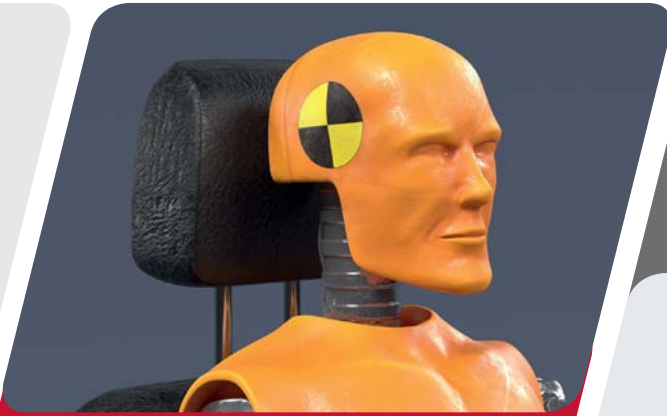
The solid, flexible chassis has elliptical front suspension and parabolic back suspension with hydraulic telescopic shock absorbers at the front and back. Front and rear stabilisers are installed as standard. Thanks to the long springs, the Aebi MT masters even strong torsion between the front and back axles without a problem.



euro6c

Powerful, efficient and clean. The new generation of engines based on the Euro6c standard with 109 or 159 hp delivers a powerful drive.



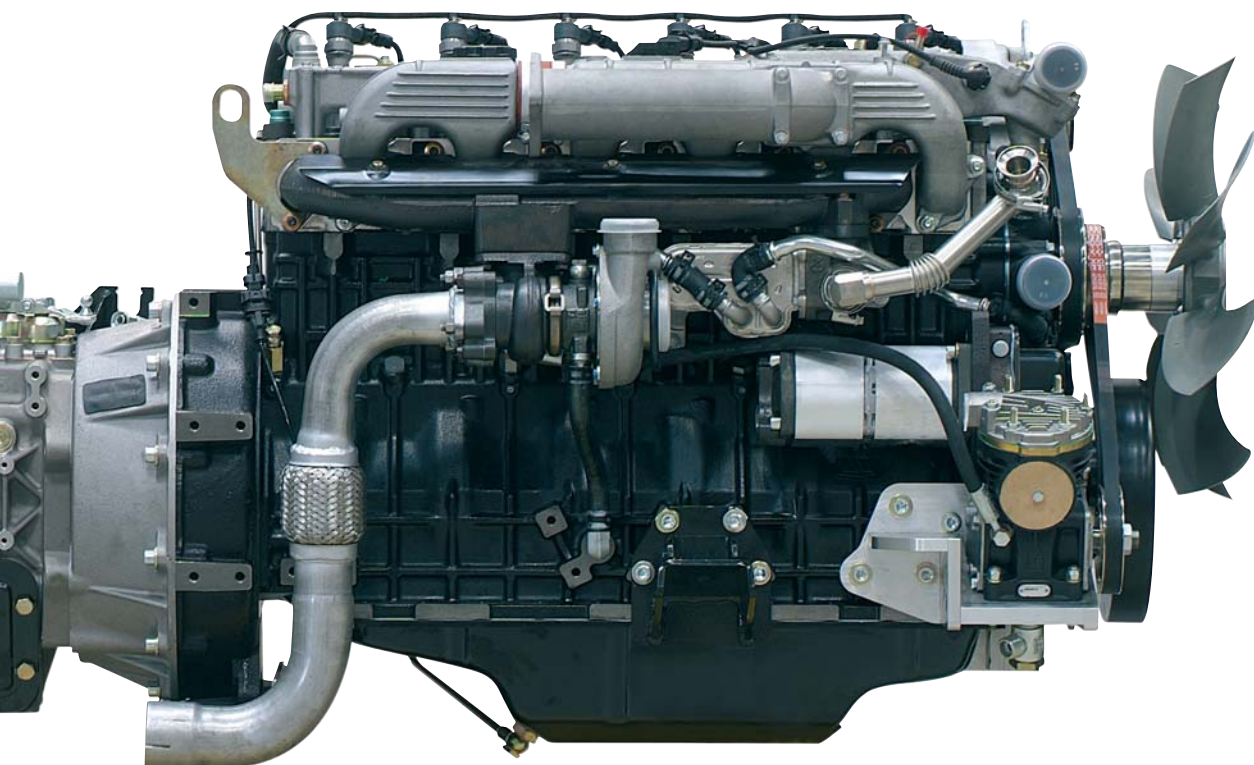


Protection in all situations – safety

Safety for drivers and passengers is the standard on board our vehicles: the cab, with space for three occupants, meets all of the current legal requirements and has been crash-tested in accordance with ECE-R 29. In combination with the latest braking systems, four-wheel drive and ABS, our vehicles offer not only comfort but, more importantly, also ensure a safe drive, even in the most difficult conditions.



Compact external dimensions allow for use even on narrow roads. The ergonomically designed driver's cab ensures the best possible view of the tools and traffic.



Flexible, strong and comfortable

Comprehensive – the hydraulics

Are you looking for a utility vehicle which can be adapted depending on the external conditions? This is incredibly simple with the Aebi MT, since we can optionally fit all vehicles with a comprehensive hydraulics system which enables simple operation of attachments and implements via a joystick.

A wide range of options– the auxiliary drive

A gear pump can be attached directly to the motor, allowing for the installation of movement hydraulics, independent from the clutch, with up to 4x double-acting clutches forwards and, optionally, backwards.

1x single-acting valve is also integrated into the movement hydraulics for the tipper body. All valves can be controlled using the joystick and have floating position functionality.

In addition to the movement hydraulics, performance hydraulics with a capacity of 50l at 180bar can be installed. The ports are located at the back right and can optionally be moved forward. The performance hydraulics is fitted with pressure, return and overflow oil lines.

Up to 52kW can be drawn from a manual gearbox and up to 80kW from a reduction gearbox, dependent on the clutch, with a pump.

Like being at home – the comfortable cab

The Aebi MT's cab has space for up to three people and is the perfect combination of functionality and comfort: noise from outside is reduced, the side windows are operated electronically and the digital instrument panel with speedometer, rev counter, fuel gauge, temperature display, kilometre display, digital information display and 21 indicator lights ensures full control. In addition, the gearstick, brake lever and comprehensive control panel are in the optimum position for the driver. For maximum comfort, an optional air suspension driver's seat can be installed.

Maximum contact – all wheels grip

The following tyre options are available for the MT models:

All season tyres



MT740/MT750:
245/70R17.5 front and rear

Ideal for body builder



MT750: 225/75R17.5 rear



MT750: 225/75R17.5 front

Comfort cab



Digital information display



Hands-free, digital radio, with Bluetooth and USB port



Gearshift with Smart Navigator

Overhauled gear change for short and dynamic gear shifts



Improved legroom



Adjustable steering column

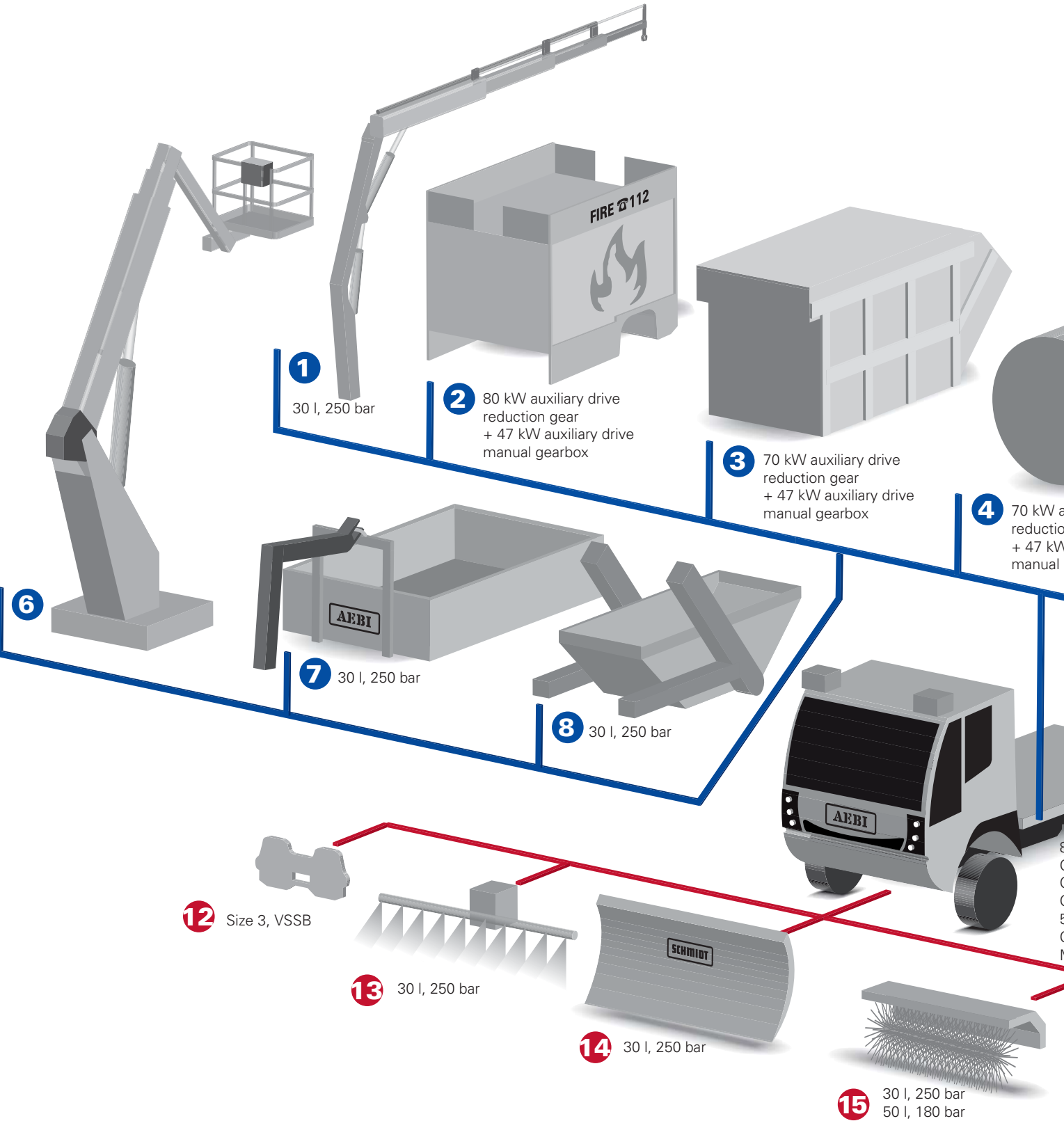
Smooth leather steering wheel with 380mm diameter



Battery isolating switch

Aebi MT Serie

Attachment and mounting areas



Mounting (up to 4.75t load capacity)

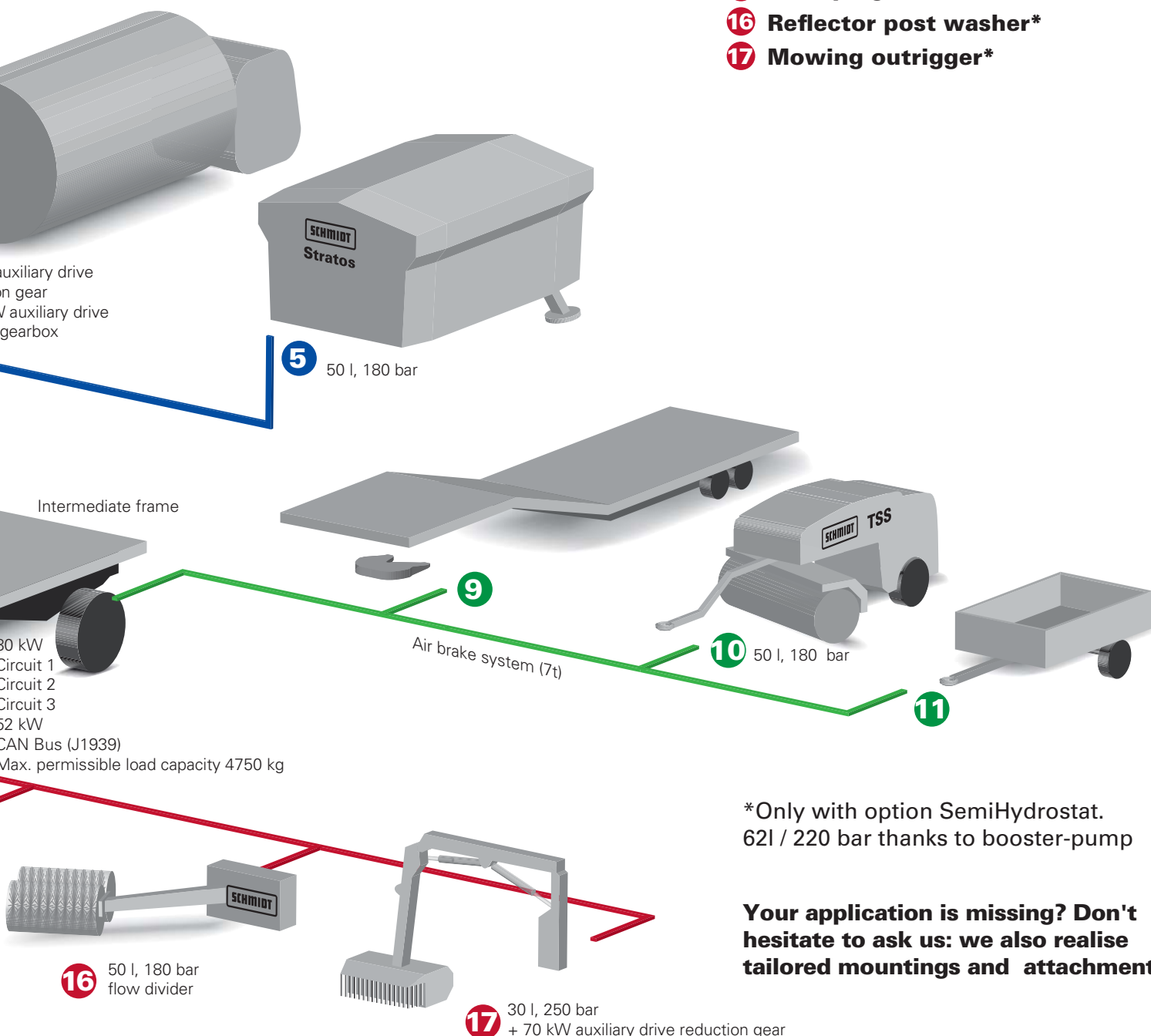
- 1 Crane
- 2 Fire service / Civil defence
- 3 Container skip / Waste collection
- 4 Liquid gas / Tank / Sewer cleaning
- 5 Stratos spreader
- 6 Lift
- 7 Tipper body / de-mountable skip
- 8 Skip loader

Rear attachment (up to 7t tensile load)

- 9 Semitrailer
- 10 TSS towed sweeping & spraying unit
- 11 Trailer

Front attachment (up to 800 kg)

- 12 Mounting bracket
- 13 Spray bar
- 14 Snow plough
- 15 Sweeping brush
- 16 Reflector post washer*
- 17 Mowing outrigger*



*Only with option SemiHydrostat.
62l / 220 bar thanks to booster-pump

**Your application is missing? Don't
hesitate to ask us: we also realise
tailored mountings and attachments.**



Winter maintenance

Great for use against snow and ice

Aebi MT vehicles are compact, powerful and versatile – making them the perfect vehicles for combating snow and ice. The four-wheel drive ensures fantastic traction and, in combination with the powerful engines, means large amounts of snow can be moved effortlessly. The broad range of de-mountable spreaders by Schmidt is suitable for combating ice. The amount of grit which is spread is regulated electronically, reducing the consumption to the optimal minimum. The ploughs can be attached directly to standard panels on the MT. A front linkage can also optionally be ordered.



Single-blade snow ploughs

Single-blade snow ploughs such as the **Schmidt FFL 24, CPL 24, MCP-S 26, MCP-P 28, CPM 27, CP 2 or SNK 27** are suitable for simple clearing operations, especially in urban areas.



Vario snow ploughs

Variable wedge-shaped snow ploughs such as the **Schmidt KL-V 24** enable flexible snow clearing in towns and cities on narrow roads, in car parks and at junctions.



Front-mounted brushes

Front-mounted sweeping equipment such as the **Schmidt VKS 22 or VKS 24 V** can be used to remove smaller amounts of snow and coarse dirt from large areas.



Multi-blade snow ploughs

The multi-blade snow ploughs such as the **Schmidt Tarron Compact MS C 27** adapt to the road surface in the best possible way thanks to the special blade control system and therefore have a particularly low environmental impact.

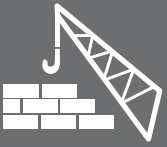


Spreaders/sprayers

Classic areas where de-mountable spreaders such as the **Schmidt Stratos or Syntos** can be used are smaller areas such as depots, car parks, cycle paths, footpaths, narrow streets in old towns and municipal roads.

MT740 Stratos F13L - 23
Stratos F17 - 23
Stratos/Syntos 11 - 18 N
CSP 1000

MT750 Stratos F17 - 23
Stratos/Syntos 11 - 21 N
CSP 1000



Skip loaders

Troughs can be loaded and unloaded, and can also be tipped to empty them.



Municipal technology & Construction

As varied as your requirements



Transporter

The high load capacity and the great pulling power enable a wide range of different transport assignments to be performed. In addition, the option of adding a semitrailer combines the advantages of a compact transporter with the freedom of a large tractor/trailer combination.



Watering technology

Water tanks such as the Schmidt CSP or TSS and a spray bar on the front make it possible to clean or combat dust on roads and water-bound pathways.



Three-way tipper/hook lift/roll-off tipper

The transportation of a wide range of different construction materials in the three-way tipper and safe driving on construction sites, thanks to four-wheel drive and large ground clearance, makes the Aebi MT the perfect construction vehicle. Flat beds with a mini-excavator or construction equipment loaded on them can be pulled onto the carrier vehicle by the hook lift and then placed down again at the construction site. As well as simple beds, bridge/crane combinations can also be set up using the hook lift.



Cranes

Variations for crane units are behind the cab or at the back on the bridge. The vehicle can be loaded and unloaded and crane work is possible. Due to the wide support, the crane can extend out a considerable distance.



Mower

The front boom flail mower makes maintaining embankments at the side of the road very straightforward. The Aebi MT with the semi-hydrostatic option is ideally suited to this.



**Work stepless -
with Semi-Hydrostatic option**

Summer maintenance

Variable-speed when working – but fast on the road. The Aebi MT with Semi-Hydrostat

The innovative traction drive combines the advantages of both a hydrostatic and a mechanical traction drive. The Aebi MT has a variable-speed drive from 0 to 20 km/h, making mowing at slow speeds child's play – even at 100 metres per hour the Aebi MT moves smoothly and with variable-speed drive. By switching to the

mechanical traction drive high speeds become possible for the transporter without any problems. The mechanical drive enables speeds of up to 89 km/h to be achieved.

The Semi-Hydrostat has many advantages: working at slow speeds is possible without additional investment. There is

no need to use the clutch and gear box when in hydrostatic driving mode. This is not only easy on the gear box and reduces wear but also ensures that working with the vehicle is relaxed and agreeable. Other outstanding properties of the hydrostatic operating range are the permanent power flow between the engine and the wheels, and precise manoeuvrability. When using the mechanical traction drive higher speeds and significant fuel savings are possible compared to a purely hydrostatic drive.

For slow working such as mowing, washing reflector posts or snow clearing the driver can switch to the hydrostatic driving mode. The hydraulic booster pump has a total hydraulic output of 70 l at a working pressure of 200 bar; this is achieved at an engine speed of only 1500 rpm, enabling the Aebi MT to operate with much lower noise emissions. When in variable-speed drive, the motor's rpm and the vehicle's speed can be optimally adjusted to suit the use and attachments.

Delineator post washing system

The delineator posts are cleaned quickly and efficiently with the RPS-H front attachment from Schmidt. The semi-hydrostatic drive is an ideal option here too.





Special tasks

An Aebi MT for all situations

Since Aebi MT vehicles can be used with a wide variety of different attachments and adapted individually, they can be used for almost any conceivable purpose. The vehicles are great for refuse collection or sewer cleaning and are even valued by the civil defence sector and fire brigade as "little all-rounders". What kind of challenge do you have? We're sure that we also have the perfect Aebi MT ready to deal with your special task.



Waste disposal and cleaning

Refuse attachment or refuse trough for removing refuse are possible options, along with gulley cleaners, drain cleaning attachments or spray bars for the wet cleaning of roads.



Protection and rescue

Equipped with a civil protection structure or as a rescue vehicle, deployment in an emergency is guaranteed with the reliable and solid carrier vehicle.



Fire-fighting technology

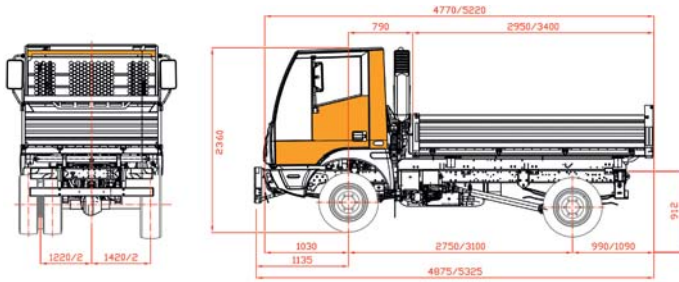
As a fire-fighting vehicle with off-road capability and great motorisation, the Aebi MT can be quickly on the scene in the event of a fire. Various options such as the portable pump vehicle, small fire-fighting vehicle, fire-fighting vehicle or pump tender meet the individual requirements, along with an optionally available double cab offering up to 6 seats.

“ Our verdict: ideally suited. Anything that passes the test here is capable of meeting mining requirements anywhere in the world ”

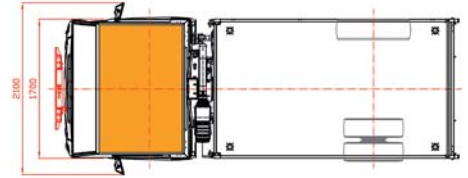
Mitteldeutsche
Braunkohlengesellschaft mbH



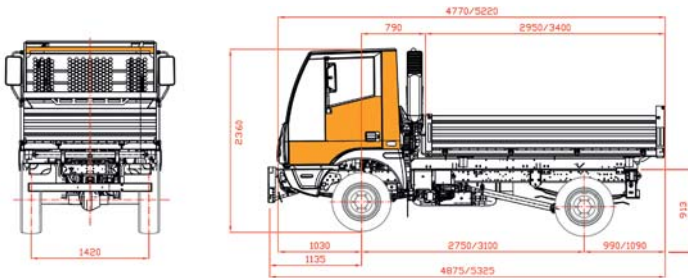
A range of models for exact solutions



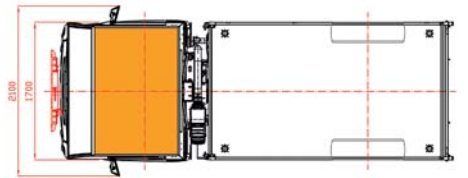
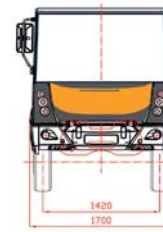
The **Aebi MT750** changes gear using a 6 + 1 R speed transmission. With a reduction gear you can choose between engageable and continuous fourwheel drive, permanent fourwheel drive is optionally available. There are a total of 12 forward and



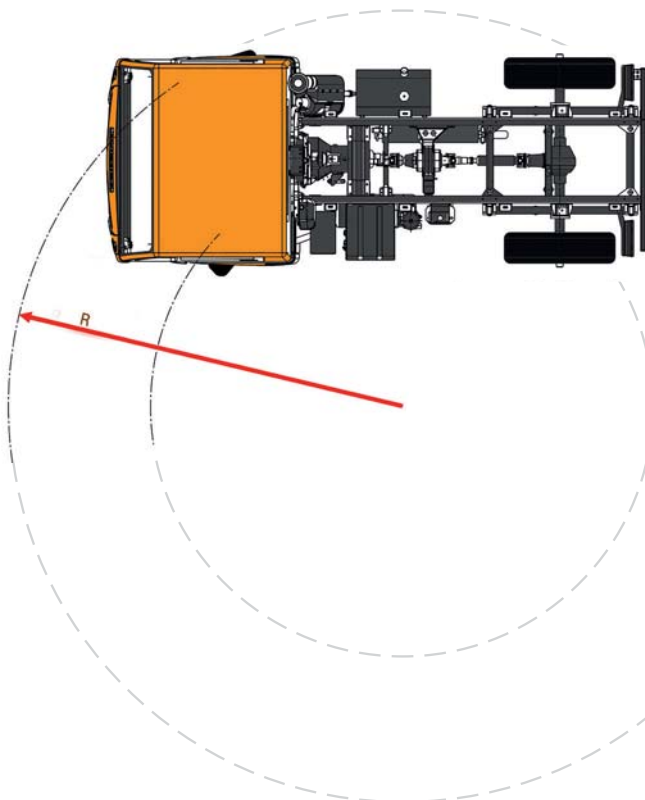
2 reverse gears. The VM turbo diesel engine (Euro 6c) with six cylinders runs very powerfully and delivers a strong 115kW (156hp). The maximum load capacity is 4.8t. Two different wheel bases are available.



In many areas, the construction of the **Aebi MT740** is absolutely identical to that of the top of the range model. The VM



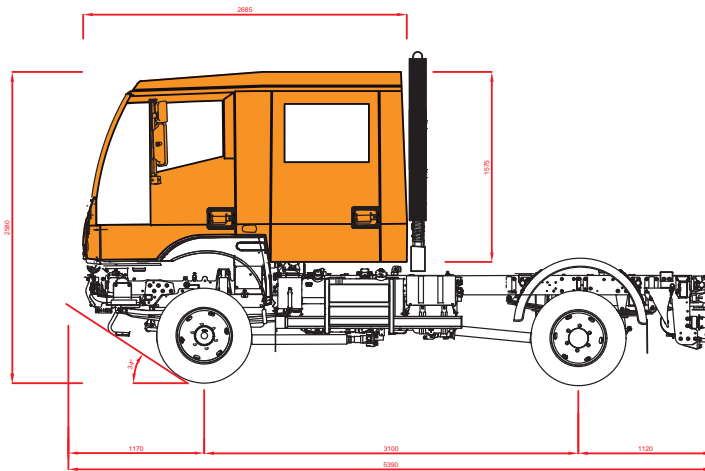
turbo diesel engine (Euro 6c) with four cylinders achieves 80kW (109hp). The maximum load capacity is 4t.



MT740/MT750

Wheel base
2750 mm
3100 mm

Turning circle radius
6.1 m
6.75 m



Double Cab MT750

Wheel base	3100 mm
Turning circle radius	6,75 m
Slope angle	
front	34°
rear	31°

The professional customised to your liking

Whatever options you want

**ALTERNATOR
180 A**

POWER HYDRAULICS 50L / 180BAR

CORROSION PROTECTION

PNEUMATIC DRIVER'S SEAT

**QUICK-CHANGE SYSTEM WITH LIFTING GEAR
TRAILER COUPLING BRAKE 7 TONNES**

**CONNECTOR SOCKET PERMANENT
VIA DEUTSCH PLUG FOUR-WHEEL DRIVE**

**ROOF LIGHTBAR WITH
BEACON**

**TRAILER
SOCKET**

**DIFFERENTIAL LOCK
AT FRONT AND REAR**



Technical specifications

The particularly compact structure of the Aebi MT means that it can also be used in difficult conditions such as on narrow streets or dirt tracks. Thanks to individual fitting, the vehicles can be prepared for almost any purpose. The three basic models are available with two engine types.

Engine and transmission	Aebi MT740
Engine (Euro 6c)	VM R754EU6c turbo diesel (4 cylinder)
Capacity	2970cm ³
Performance	80kW (109hp at 3000 1/min
Max. Torque/torque increase	420Nm at 1100 1/min / 40%
Transmission/reduction gear	12 forward gears / 2 reverse gears
Clutch	Hydraulically operated dry single disk clutch
Drive	4x4, on-demand front wheel drive. Optional: perm. four-wheel drive
Driving and equipment	
Speed	40km/h (6.5t) or 90km/h (6.5t)
Turning circle	12.2m (wheel base: 2750mm) / 13.5m (wheel base 3100mm)
Steering	ball-and-nut hydraulic steering
Tyres	245/70R17.5
Brakes	Ventilated rear disk brakes, pneumatic-hydraulic two-circuit system
Parking brake	Spring mechanism, works on the back wheels
Tank capacity (fuel tank / AdBlue)	90l / 14l
Electrical system	12V, alternator 105A, option: alternator 180A
Battery capacity	100Ah
Movement hydraulics (1 circuit – optional)	30l/min max. 200bar (optional: 250bar with continuous operation on circuit 1 with electrical monitoring)
Movement hydraulics (2nd circuit – optional)	30l/min max. 200bar and performance hydraulics 50l/min max. 180bar
Movement hydraulics (3rd circuit – optional)	As 2nd circuit + proportionally adjustable via joystick and 2 additional forward connections
Dimensions and weights	
Wheel base	2750mm / 3100mm
Length	4875mm / 5325mm
Width (cab)	1700mm
Height (cab)	2360mm
Empty weight	2480kg
Permissible overall weight (max. with corresponding stand. equipment)	6500kg (40km/h) / 6500kg (90km/h)
Max. permissible load capacity	4020kg (40km/h) / 4020kg (90km/h)
Max. weight on the front axle	3100kg (40km/h) / 3100kg (90km/h)
Max. weight on back axle (tyre-dependent)	4250kg (40km/h) / 4250kg (90km/h)
Towing capacity (trailer without brakes/with brakes)	750kg /3500kg (overrun brake)

Aebi MT750

VM R756EU6c turbo diesel (6 cylinder)

4500cm³

115kW (156hp) at 3000 1/min

500Nm at 1400 1/min / 31%

12 forward gears / 2 reverse gears

Hydraulically operated dry single disk clutch

4x4, on-demand front wheel drive. Optional: perm. four-wheel drive

40km/h (7.5t) or 90km/h (7.5t)

12.2m (wheel base: 2750mm) / 13.5m (wheel base 3100mm)

ball-and-nut hydraulic steering

245/70R17.5 Optional: 225/75R17.5

Ventilated rear disk brakes,

pneumatic-hydraulic two-circuit system

Spring mechanism, works on the back wheels

90l / 14l

12V, alternator 105A, option: alternator 180A

100Ah

30l/min max. 200bar (Optional: 250bar with continuous operation on circuit 1 with electrical monitoring)

30l/min max. 200bar and performance hydraulics 50l/min max. 180bar

As 2nd circuit + proportionally adjustable via joystick and 2 additional forward connections

2750mm / 3100mm

4875mm / 5325mm

1700mm

2360mm

2700kg

7500kg (40km/h) / 7500kg (90km/h)

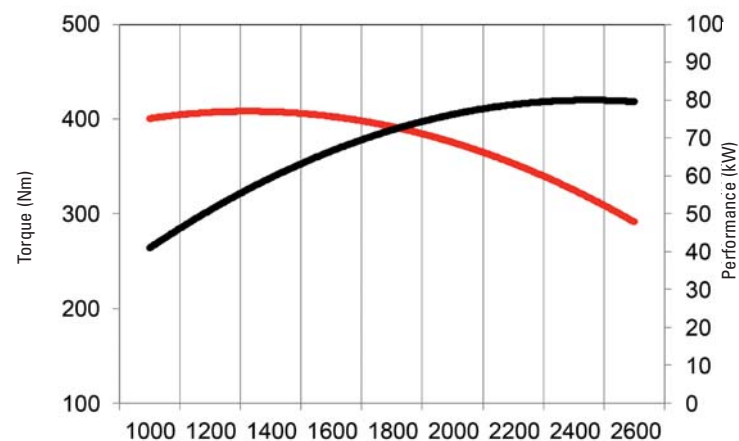
4800kg (40km/h) / 4800kg (90km/h)

3100kg (40km/h) / 3100kg (90km/h)

4800kg (40km/h) / 4800kg (90km/h)

750kg / 3500kg (overrun brake) / 7000kg (cont. brake)

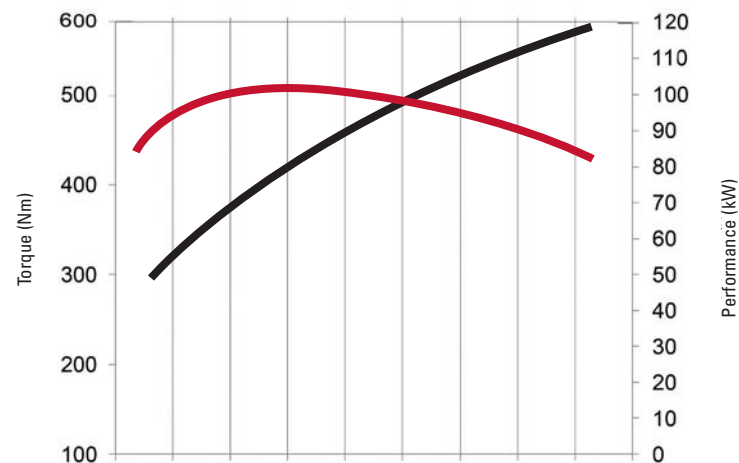
Engine curve VM R754 EU6c **MT740**



Torque curve 6-cylinder

Performance curve 6-cylinder

Engine curve VM R754 EU6c **MT750**



Torque curve 4-cylinder

Performance curve 4-cylinder



Aebi MT740 with branch and hedge trimmer



MT740 with truck bed



MT750 with hook lift



MT750 with civil protection attachment



MT750 with washing bar



Aebi MT750 with Schmidt TSS



MT740 with platform and cover



MT740 with civil defence attachment



MT740 with sewer cleaner



Aebi MT750 with double cap and fire fighting equipment



MT740 with tipper



Aebi MT740 with weed brush



MT740 with crane and tipper

Aebi Schmidt Holding AG
Marketing and Communication



Scan and experience ASH
Group on YouTube

Subject to technical changes.
Photographs not binding.

www.aebi-schmidt.com

We are happy to advise you!